

**AASHTO Transportation
Estimators Conference**

November 4, 2002

Austin, Texas

Thomas R. Bohuslav, P.E.

Director, Construction Division

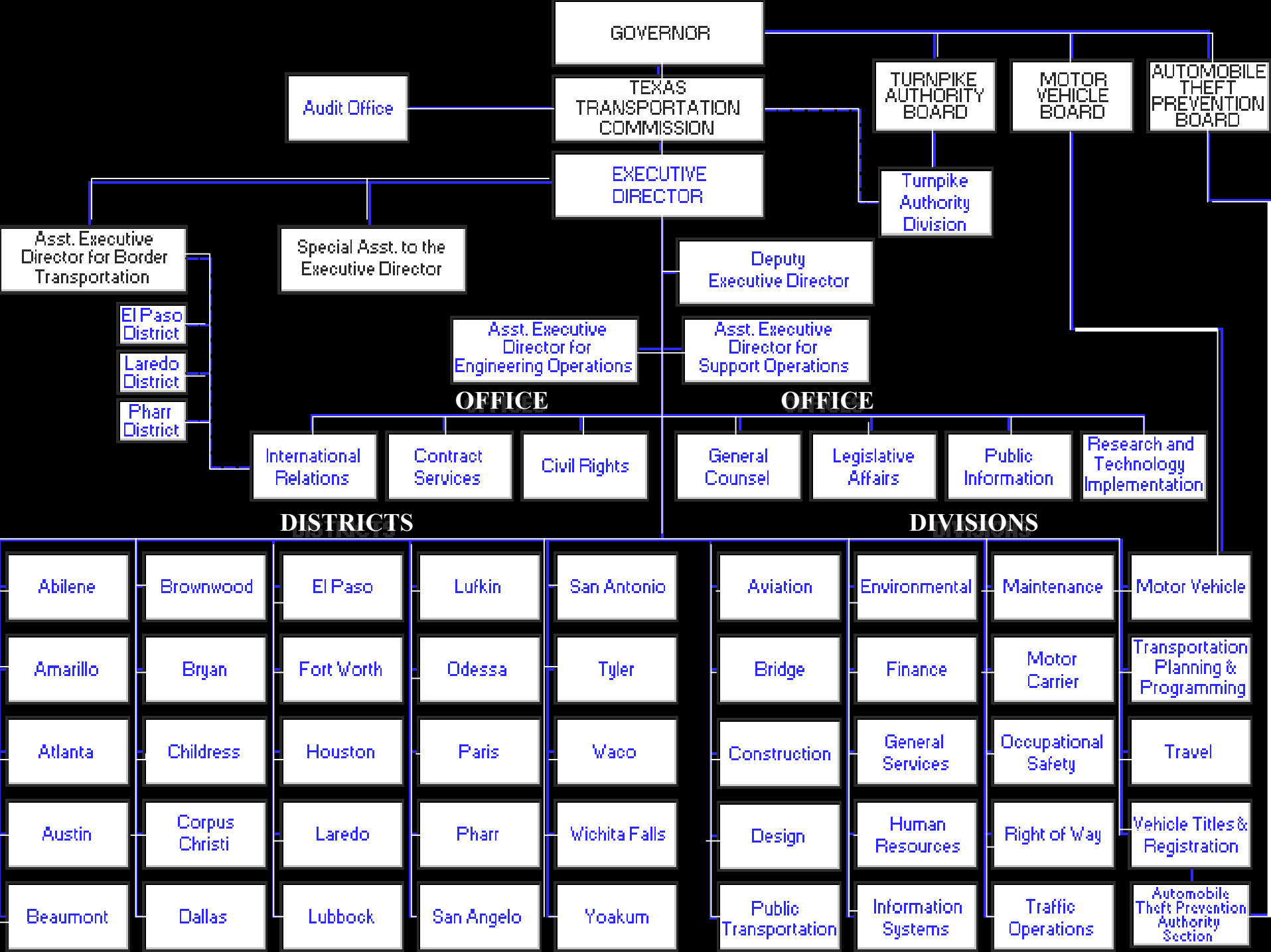
TxDOT

Discussion Topics

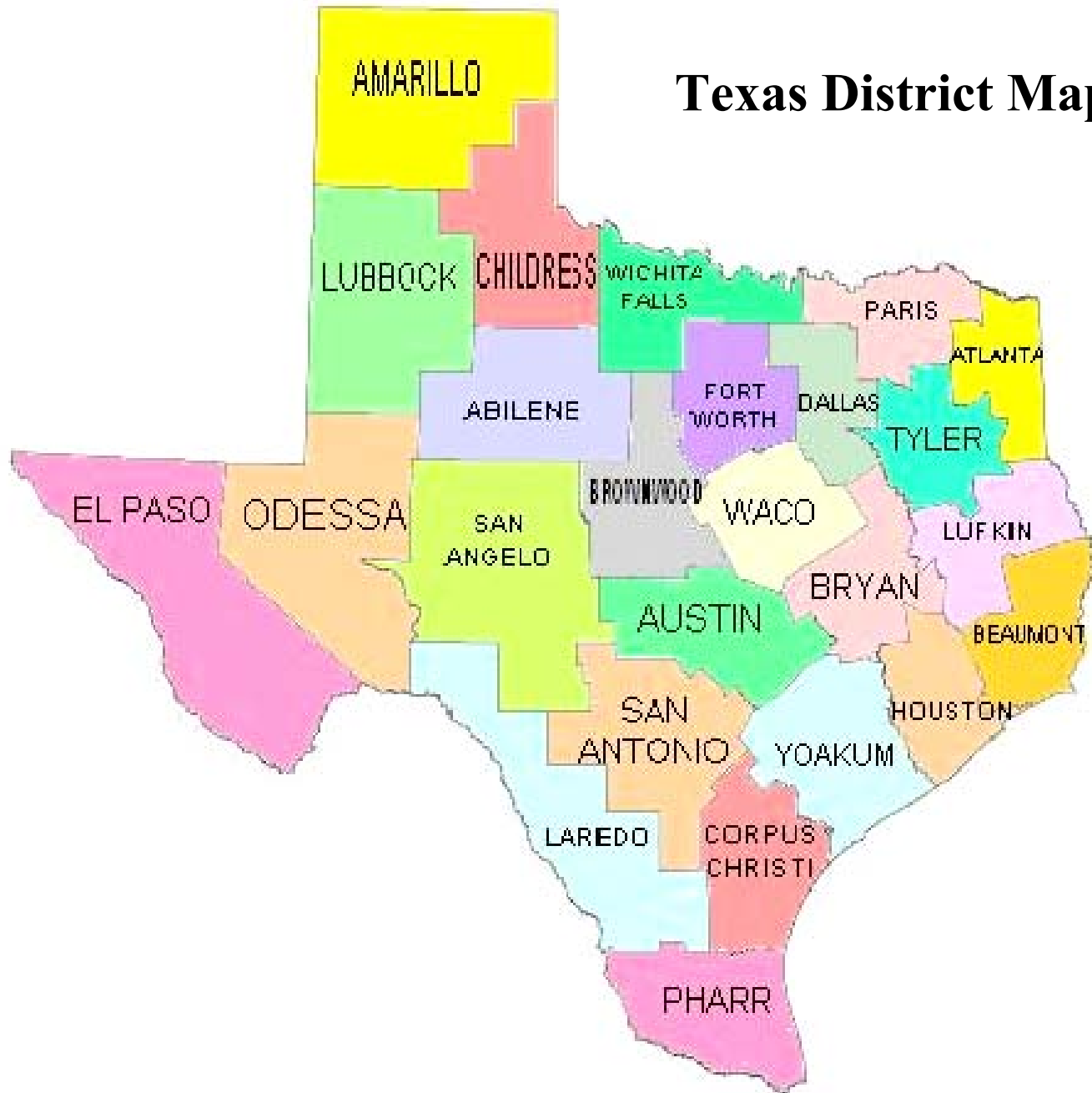
- State Organization
- Highway System
- Border Issues
- Environmental Issues
- Trans Texas Corridor
- Construction Program
- Maintenance Program

TxDOT

- 14,500 Employees
- \$5 Billion Budget
- \$3 Billion Plus Letting
- Organization



Texas District Map

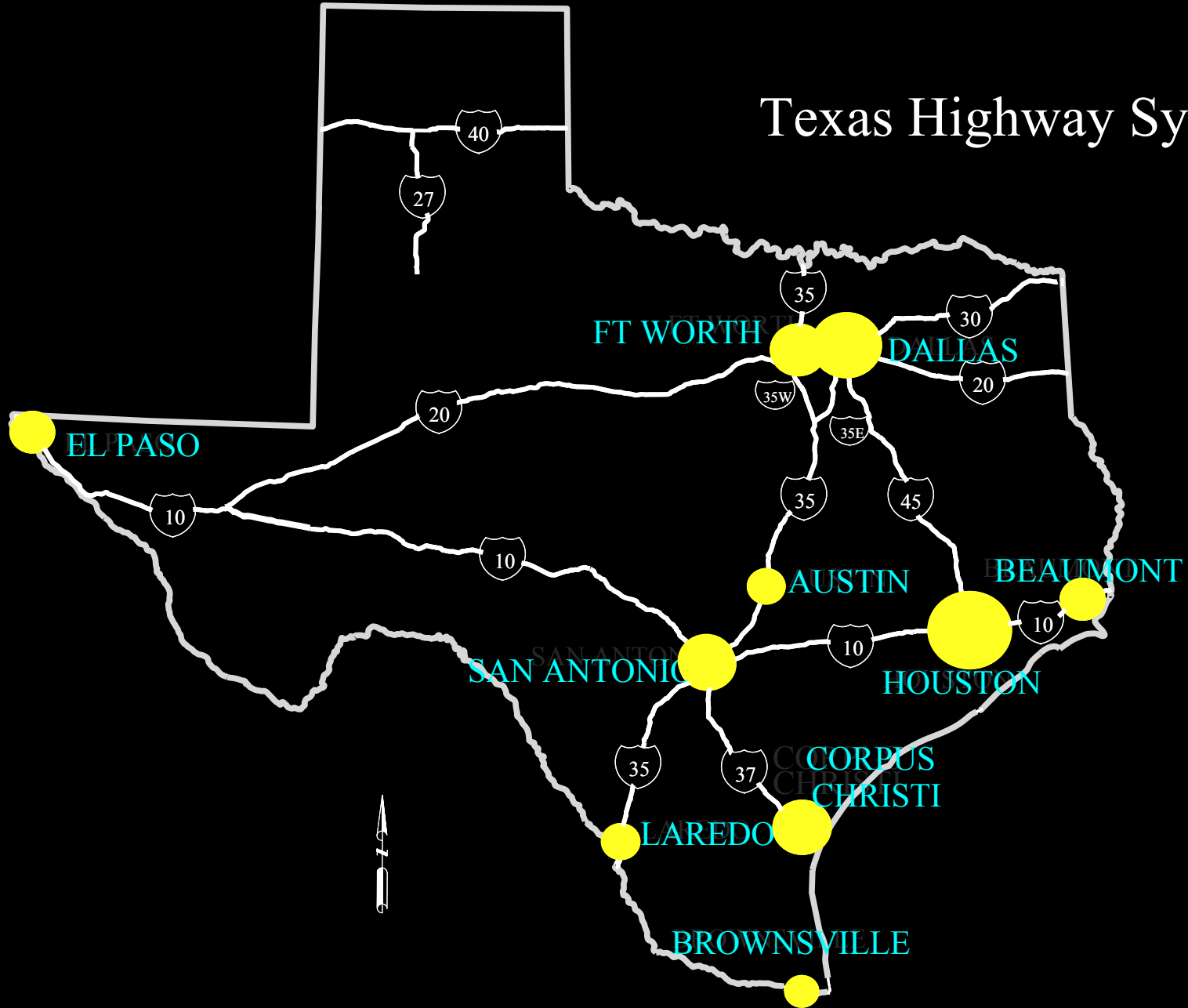


Districts

	<u>Range</u>		
• Square Miles	5,543	to	21,711
• Center Line Miles	1,902	to	5,232
• Lane Miles	4,910	to	11,948
• Vehicle Miles	2,407,030	to	67,549,266

Highway System

Texas Highway System



SCALE IN MILES



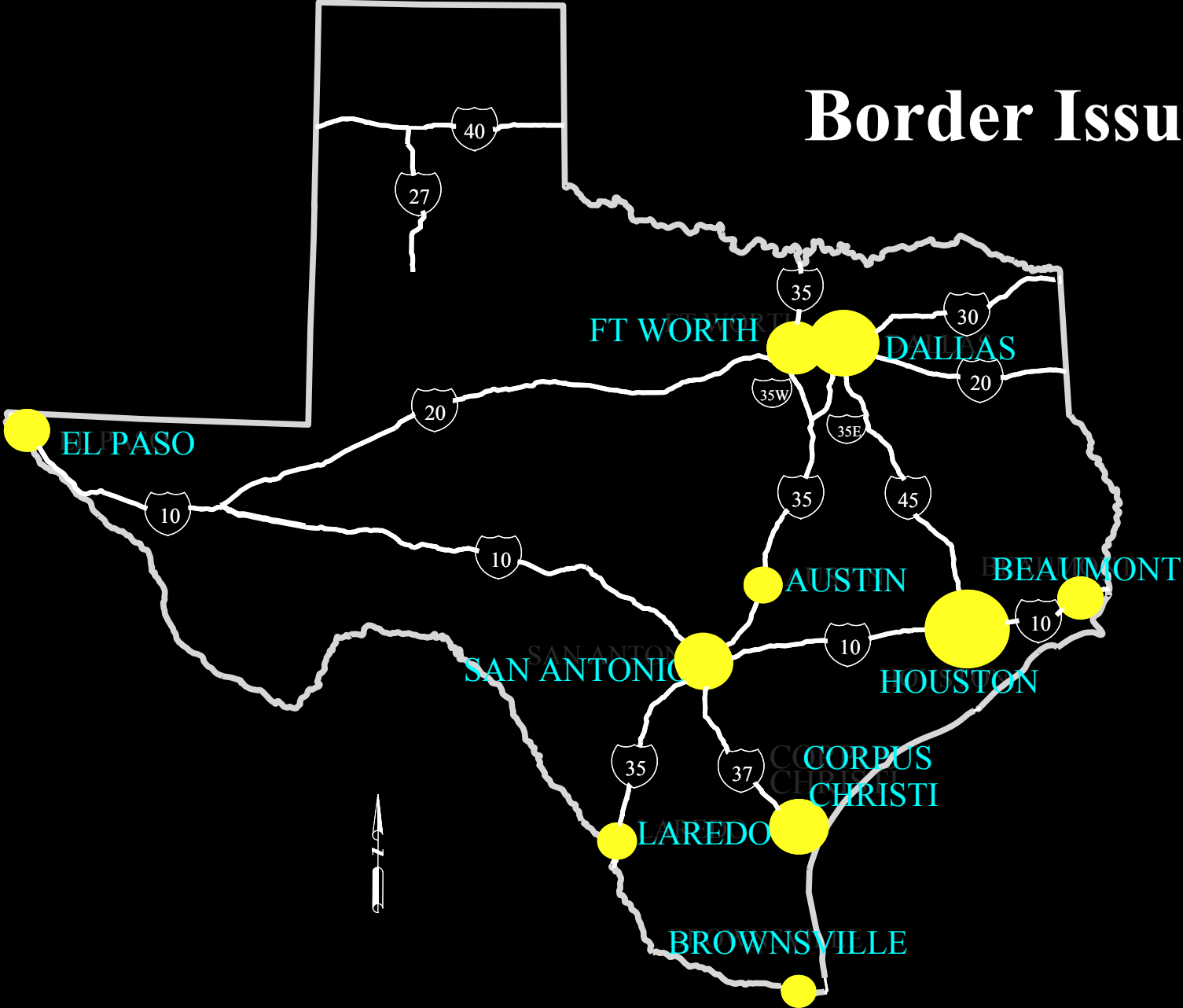
Texas Highway System

	<u>Center Miles</u>	<u>Lane Miles</u>	<u>Daily Vehicle Miles</u>
• Interstate Highways	3,233	14,770	129,613,839
• Frontage Roads	6,481	13,018	13,953,396
• US, UA, UP	12,109	34,517	99,617,817
• SH, SS, SL, BUS RTS	16,154	40,236	99,174,312
• FM, RM, RR	40,984	83,900	58,261,187
• Park Roads	335	711	721,394
SUBTOTAL:	79,297	188,055	417,121,294
• Off System Highways	221,784	449,826	169,734,572
TOTAL:	301,081	636,978	586,855,886

Texas Bridges

- **On System Bridges**
 32,552
- **Off System Bridges**
16,560
- **2 Ferry Systems**
 - Galveston / Bolivar
 - Corpus Christi / Port Aransas

Border Issues



SCALE IN MILES







Environmental Issues

- Isolated Wetlands
- Migratory Bird Treaty Act
- Project Specific Locations (PSLs)
- Non-attainment

Non-Attainment Areas

- Houston / Galveston
- Beaumont / Port Arthur
- Dallas / Fort Worth
- El Paso

8 Hour Standard Non-Attainment

- San Antonio
- Austin
- Tyler / Longview
- Additional Counties:
Dallas / Fort Worth

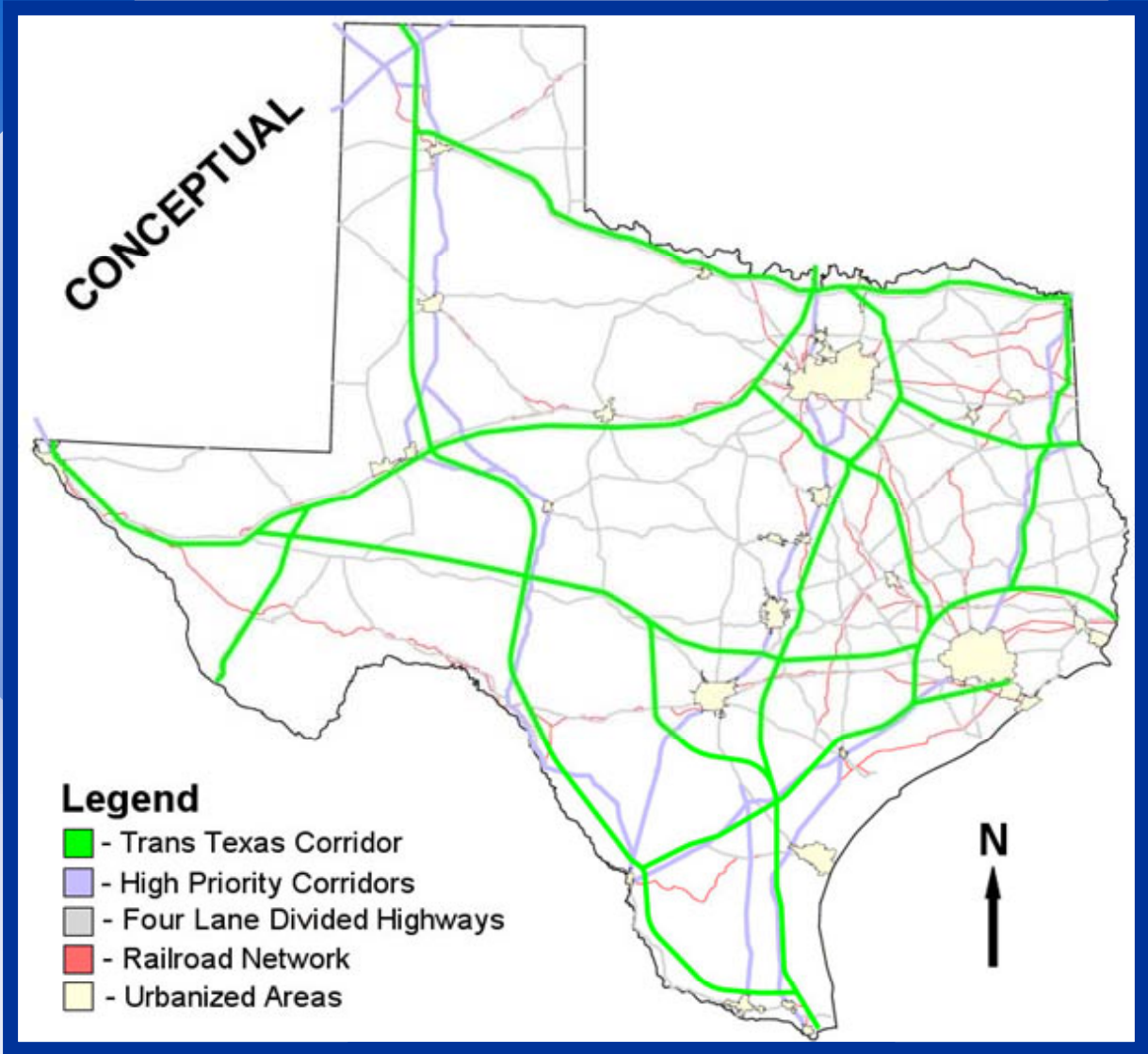
S I P

- Emulsified Diesel
- Equipment Requirements



**Trans Texas
Corridor**





**Trans Texas
Corridor**



Construction Program

- \$2.8 Billion Letting
- Average \$2,500,000 Project Size \$10,000 - \$100,000,000 (\$260,000,000)
- 1200 Projects Let Each Year in Construction and 1200 in Maintenance
- 4 Bidders Per Project (7 bidders if over 15 million)
- 60% < \$300,000 (including maintenance)
- 65% \$ Design Consultants
- ~ 95% Inspection by State Forces

Toll Roads

- SH 130 - \$1 Billion
- Central Texas - \$2 Billion
- Exclusive Development Agreements
- Conventional Design-Bid-Build

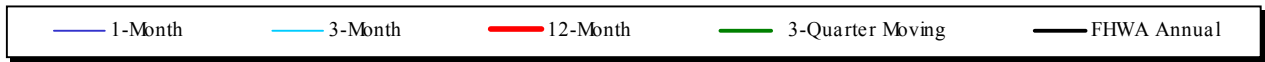
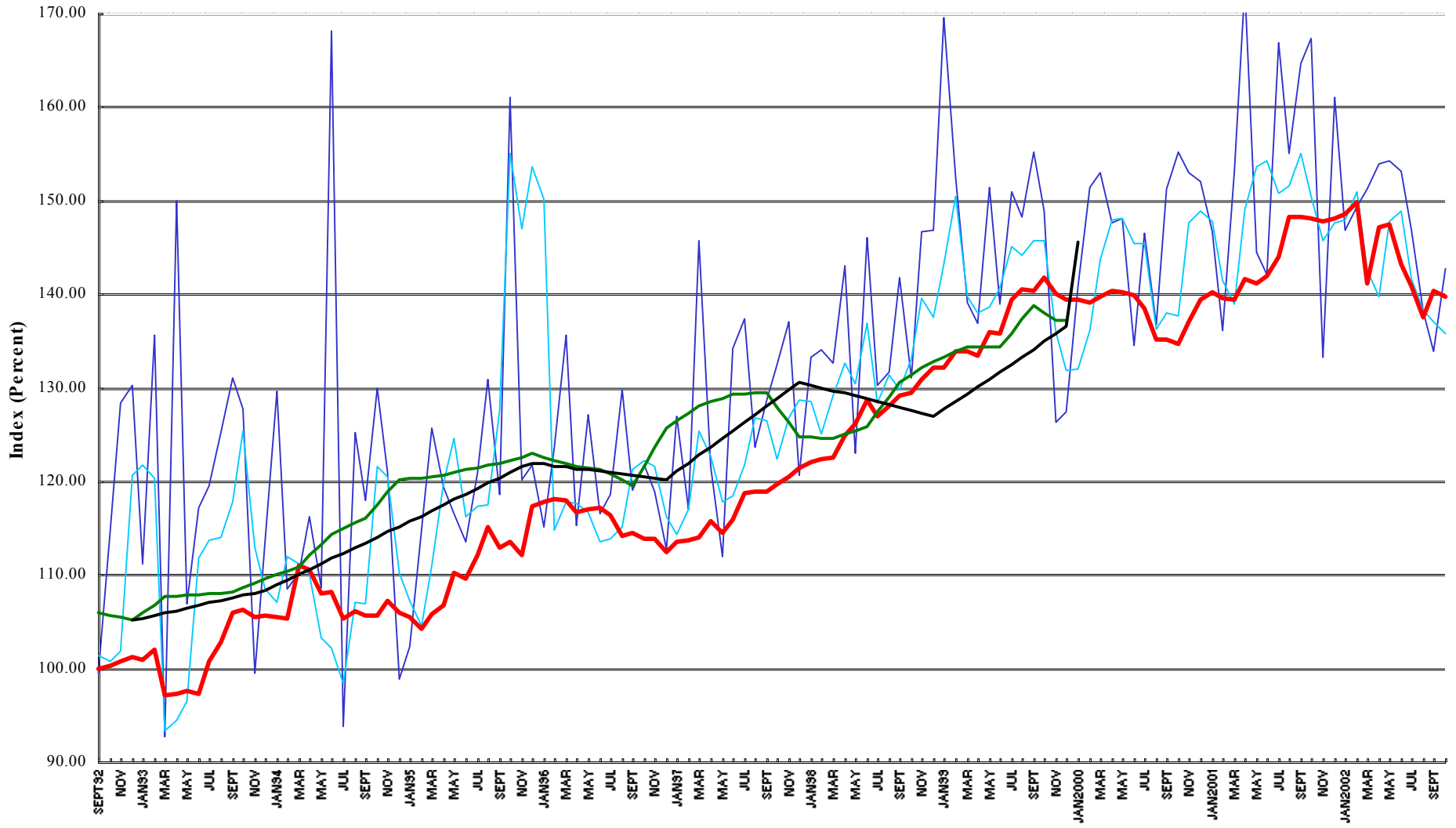
Cost Studies

Competition Vs Project Size

FY 2000

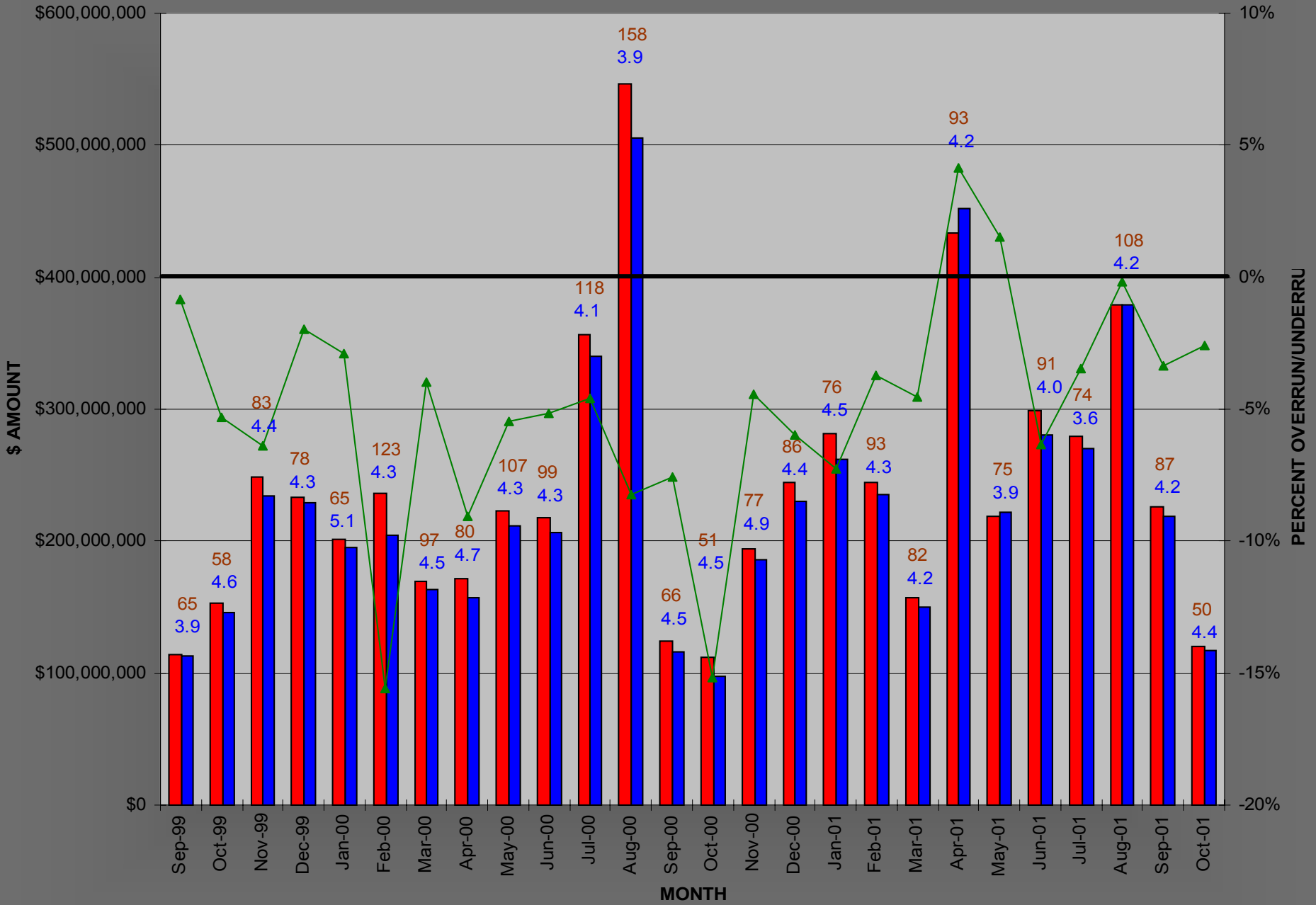
Award Amount	# of Contracts	Avg. # of Bids
Less than \$300,000	211	4
\$300,000 to \$1 million	315	4
\$1 million to \$5 million	485	4
\$5 million to \$20 million	106	5
Greater that \$20 million	14	7

Construction Cost Index September 1992 Through October 2002



HCI Plus

- Environmental Issues
- Administrative Burden
- Increasing Design Demands
 - Pavement Thickness
 - Traffic Requirements(ITS, etc)
 - Gradelines
- Miscellaneous Products



■ NO. OF PROJ.
 ■ AVG. NO. BIDS PER PROJ.

■ ENG. EST.(MILLIONS)
 ■ \$ BID (MILLIONS)
 ▲ % BIDS UNDER/OVER ENG. EST.

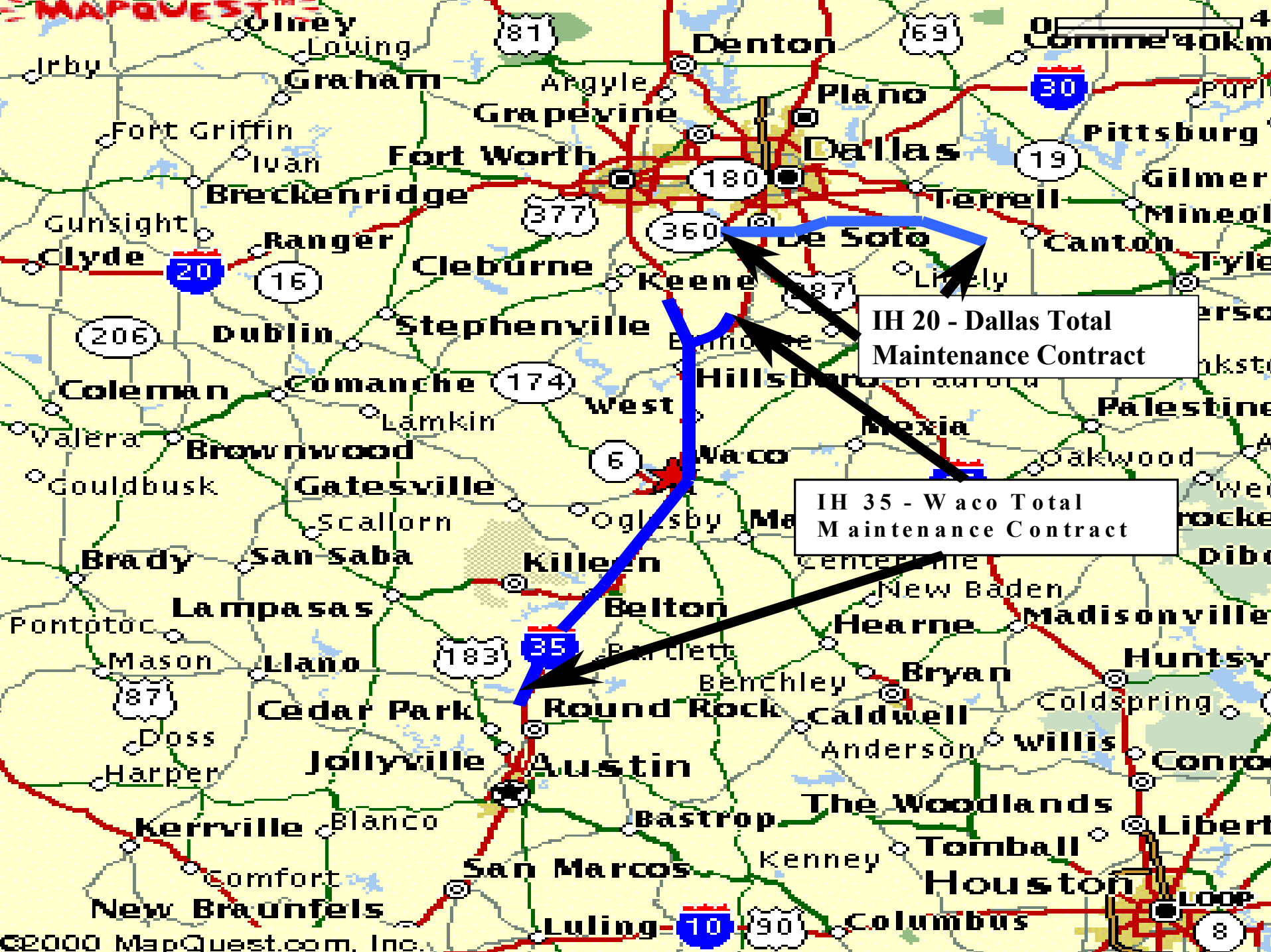
Maintenance Program

- 52% Contracted
- Total Maintenance Contract

PRIVATE
MAINTENANCE

VMS. INC.
888-723-3033





IH 20 - Dallas Total Maintenance Contract

IH 35 - Waco Total Maintenance Contract

Initiatives

- EBS
- SiteManager
- Design Build (DB)
- Exclusive Development Agreement
- Plans and Proposals - Manuals and Specifications On-line
- Contractor Submittals (Internet)
- Testing Program Efficiencies
- Warranties

