

Transportation Estimating

BID COMPARISON DATA FOR
FHWA ESTIMATE GUIDELINES

George Bradfield - Chief Estimator
Georgia Department of
Transportation

Federal Aid Policy Guide and Technical Advisories Relative to Estimates

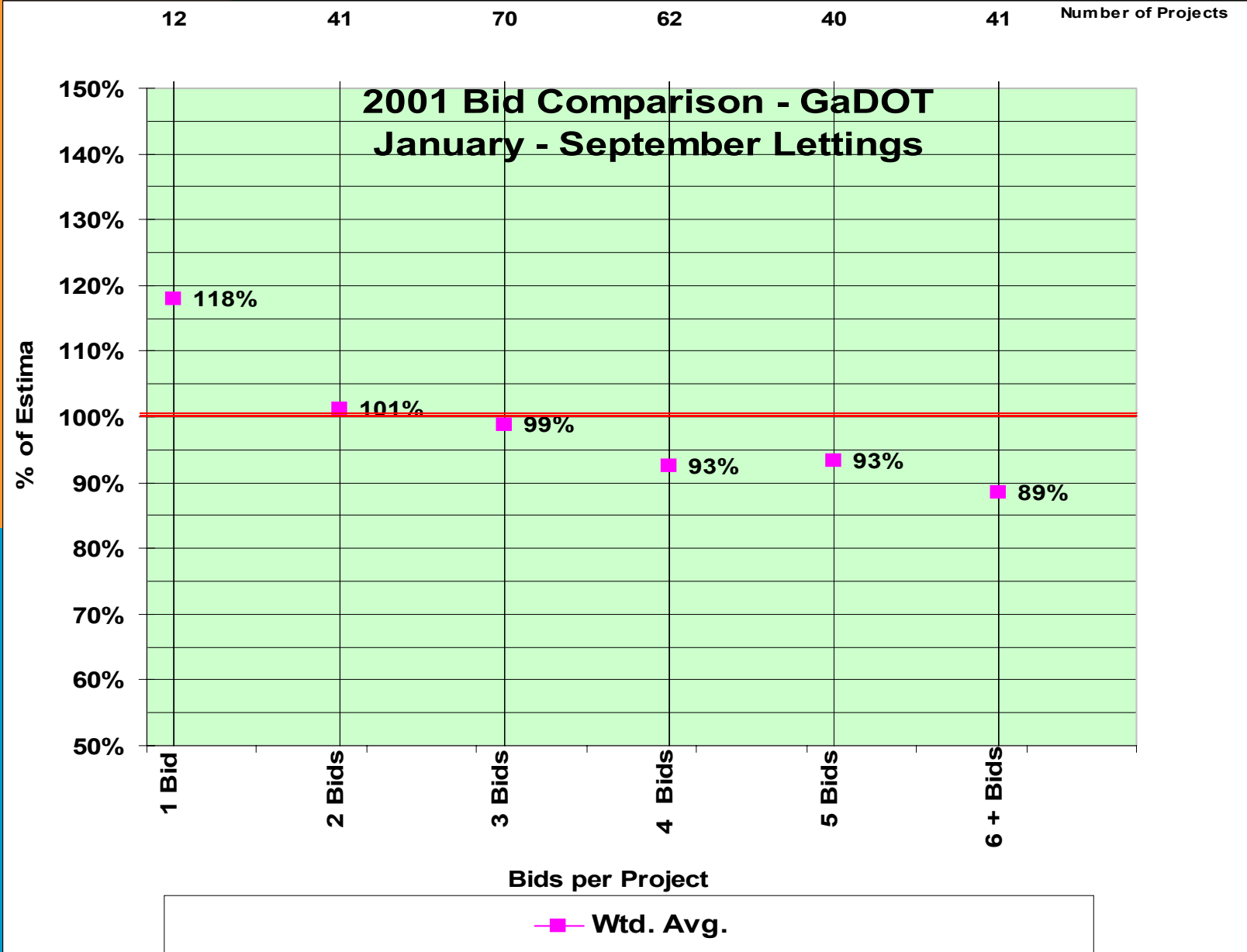
- NS 23 CFR 630B
- Technical Advisory 5080.4
- Guidelines for Preparation of Plans, Specifications, and Estimates
- Preparing Engineer's Estimate and Reviewing Bids
- States Using Current Guidelines?

Relationship between the number of bids to the Estimate.

- Bidder Analysis Graphs
- TEA Website Shared Resources (Excel Spreadsheet)

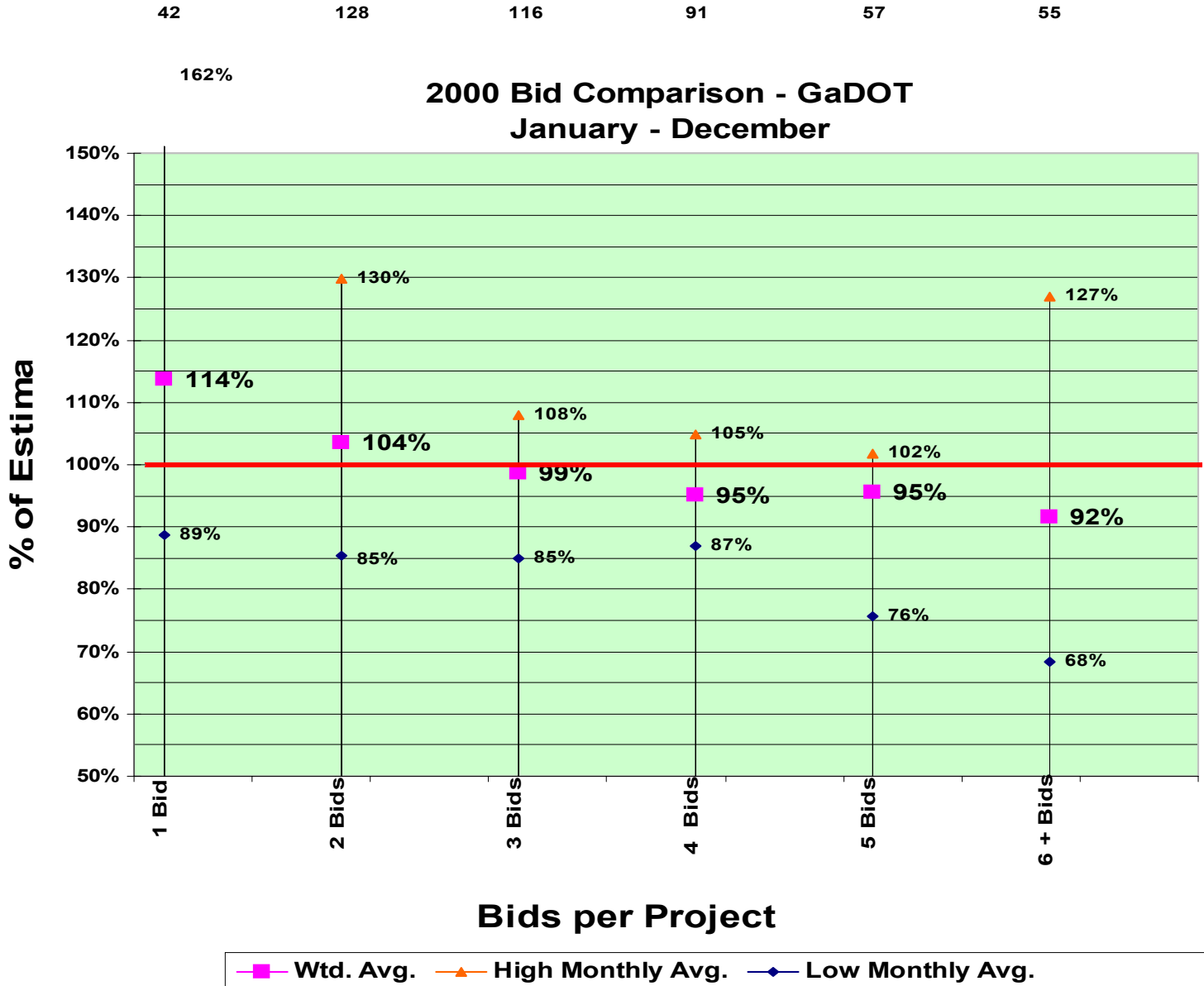
DOT Bidder Analysis

Indianapolis 2001



DOT Bidder Analysis

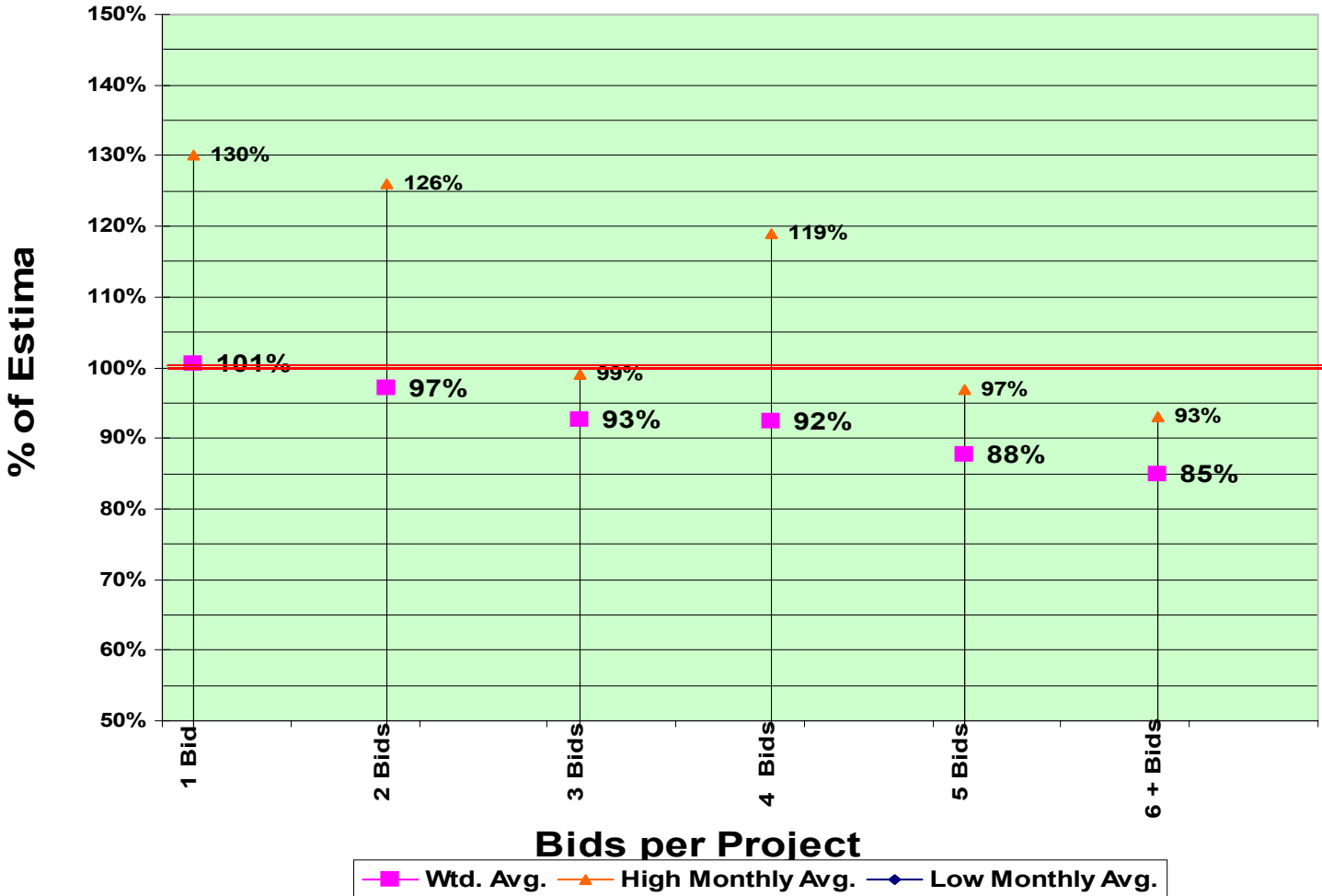
Indianapolis 2001



DOT Bidder Analysis

Indianapolis 2001

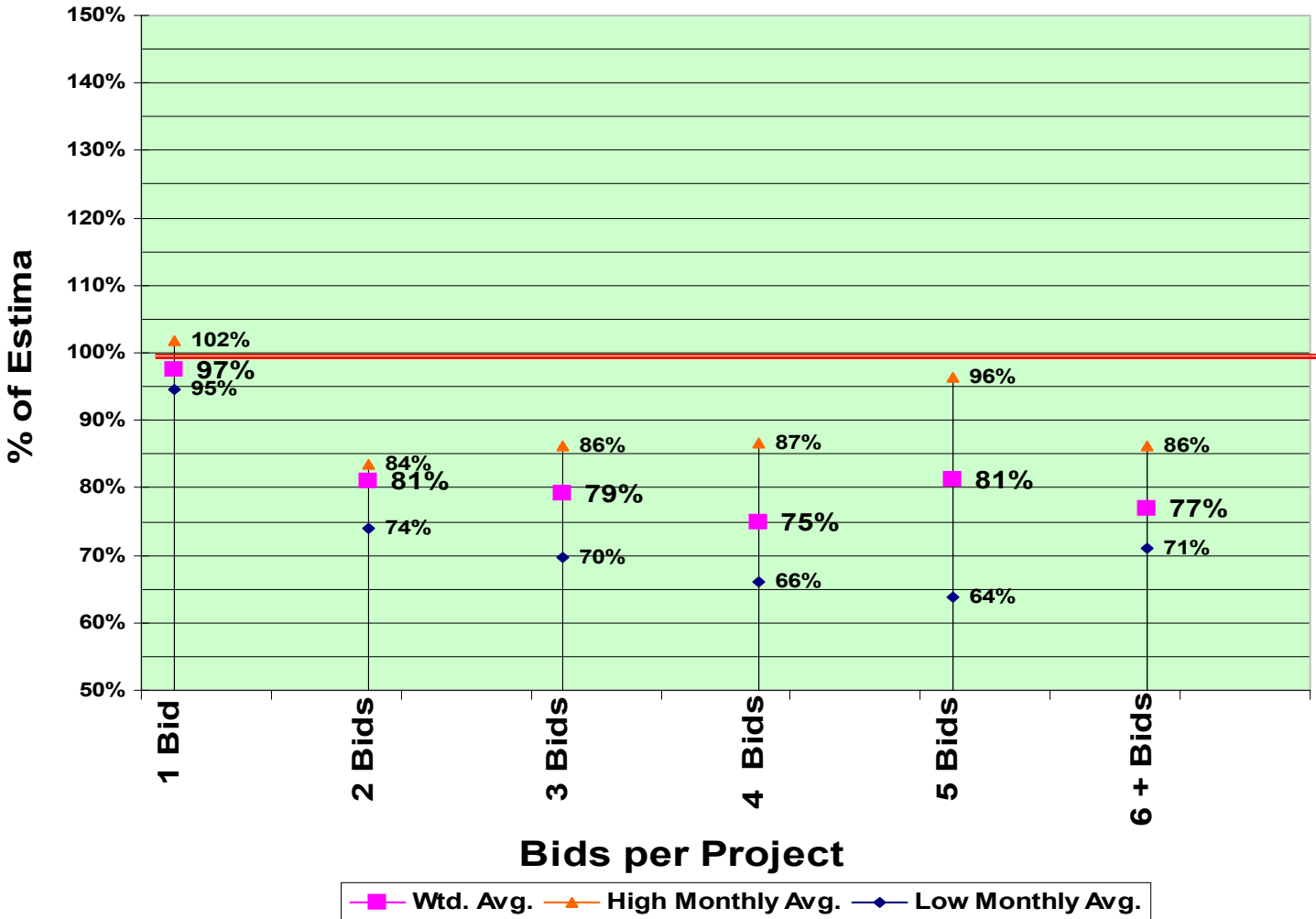
2000 Bid Comparison
January - August
State 2



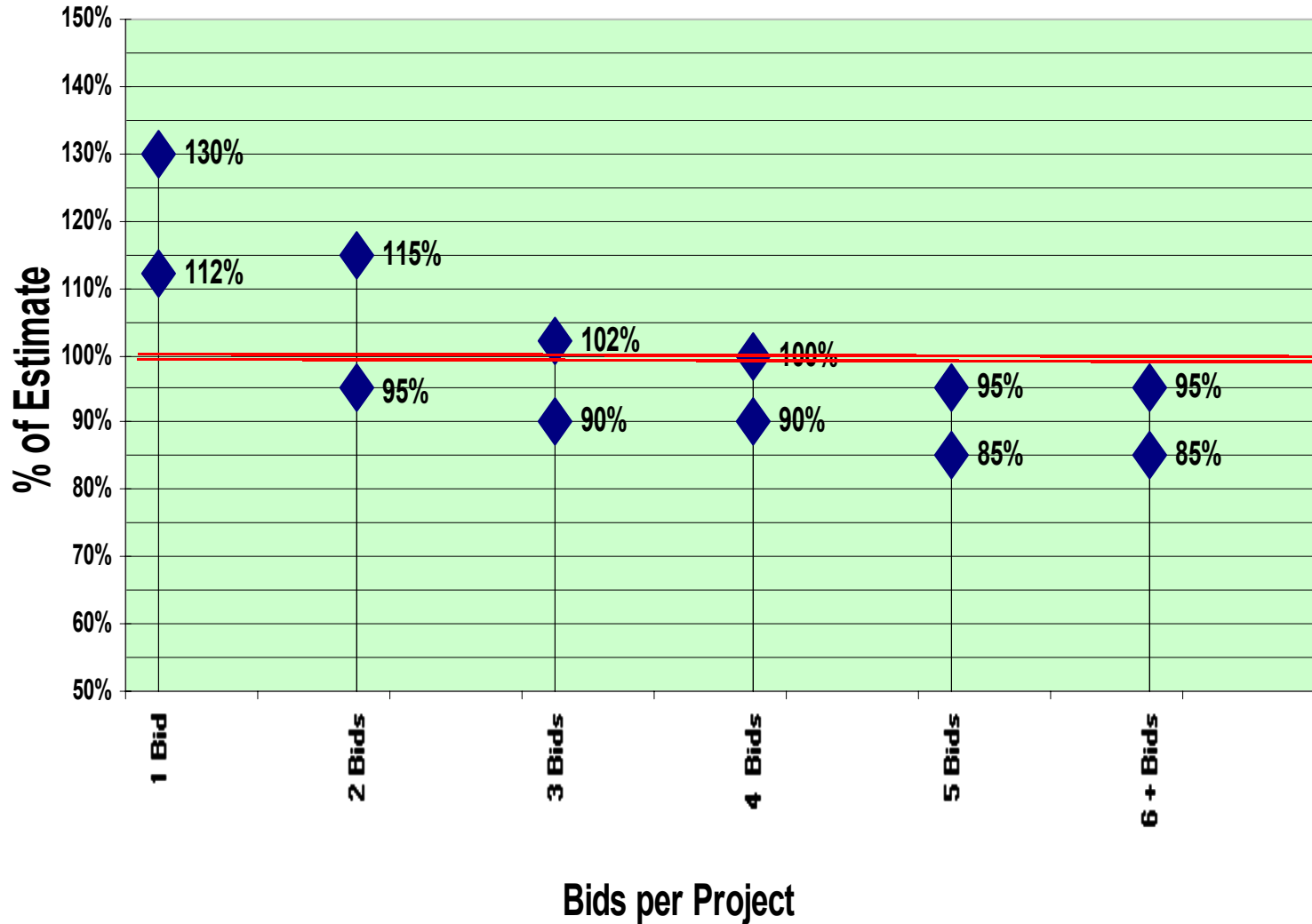
DOT Bidder Analysis

Indianapolis 2001

2000 Bid Comparison
January - September
State 3



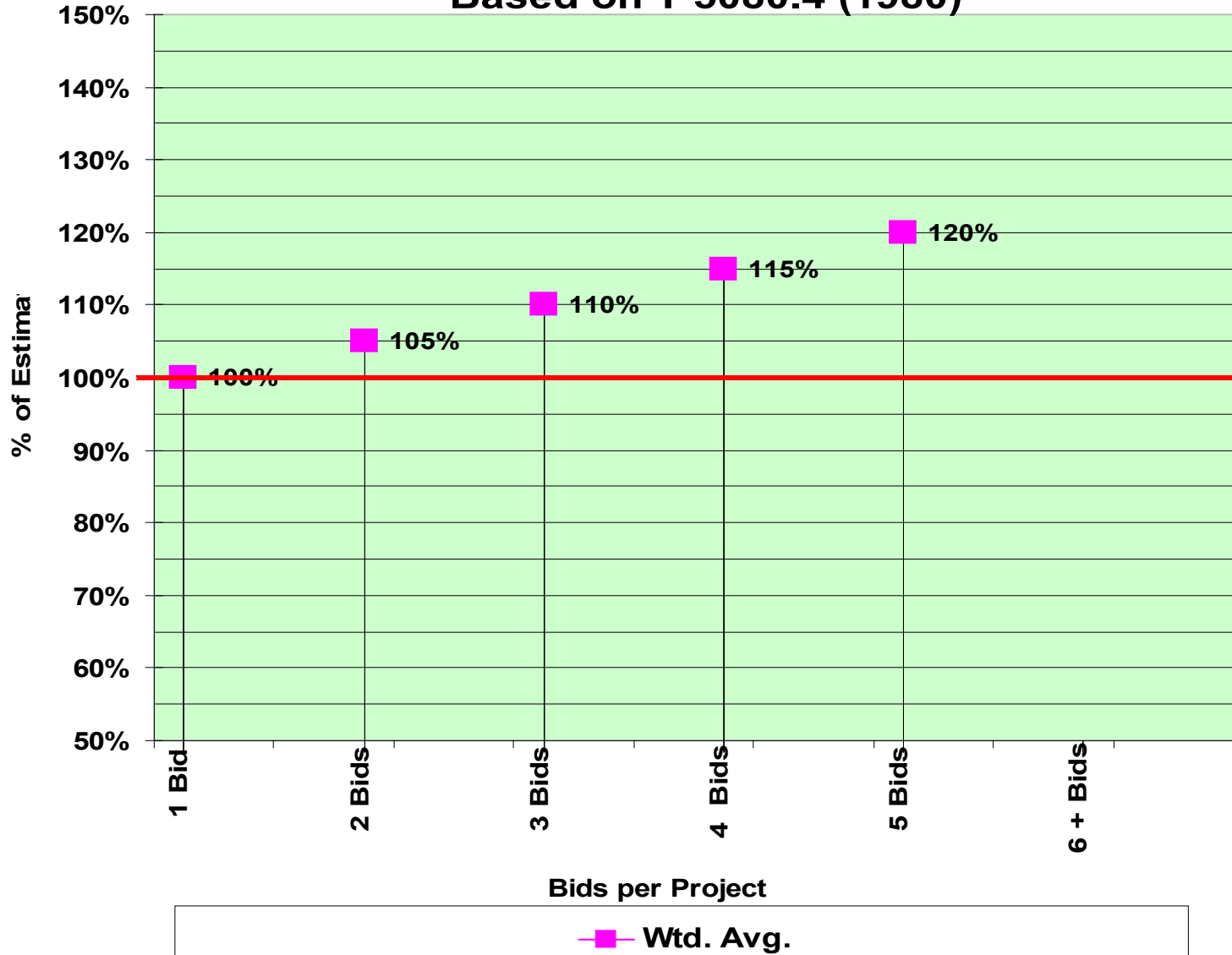
Proposed Model for Bid-Estimate Comparison



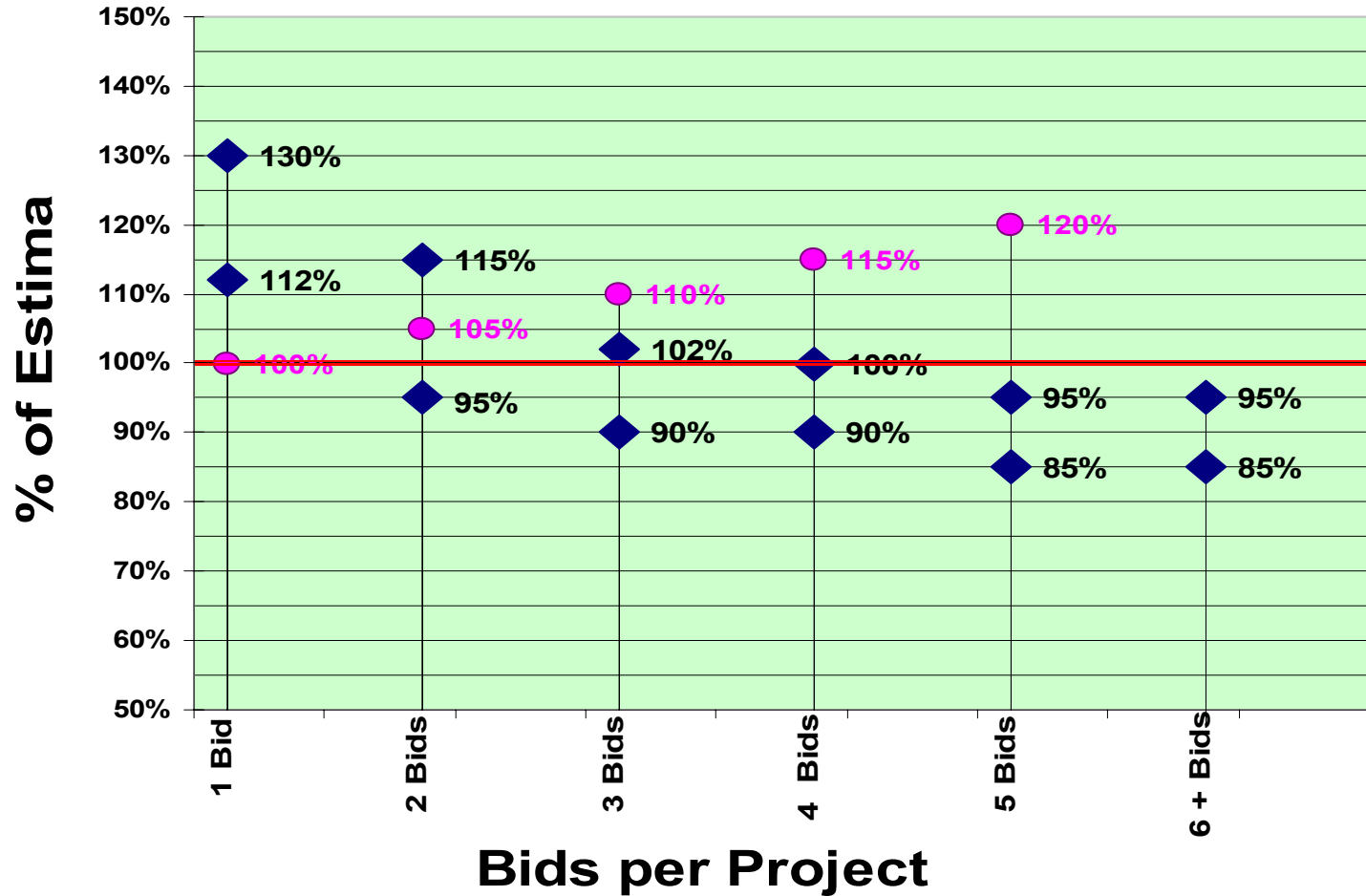
DOT Bidder Analysis

Indianapolis 2001

FHWA Bid Evaluation Guidelines Based on T 5080.4 (1980)



Proposed Model & FHWA Evaluation Overlay for Bid-Estimate Comparison



◆ High Bid Avg.
 ◆ Low Bid Avg.
 ● FHWA Avg.

Judging the Quality of an Estimate.

- Quality of an estimate IS NOT and HAS NOTHING to do with the direct relationship to the low bid
- 25% over OK
- Management responsibility
- Quality estimating practices establishes CREDIBILITY

Guidelines for Improved Quality of Our Estimates

- Estimator certification program
- Estimating manual
- Estimate analysis graphs
- Estimate quality relative to contract document
- Estimator responsibility